

## Why use SWCD educational resources?

- **Enrich** the academic experience with hands-on activities
- **Demonstrate** scientific concepts with interactive physical models
- **Apply** real-world science at rivers, lakes, woods, and prairie sites
- **Engage** students with local experts in the conservation field
- **Motivate** students toward regional and statewide competitions
- **Expose** learners to possible careers in resource management
- **Prepare** young people to be the conservation leaders of tomorrow
- **Maximize** smaller budgets by accessing the free resources available through *your* Clearwater Soil and Water Conservation District.



## Who benefits from SWCD educational resources?

Our free educational resources exist for the benefit of our county and region. We welcome inquiries from scoutmasters, teachers, homeschooling parents, 4-H leaders, and other youth and community education organizations. Give us a call to find out how we can work together.

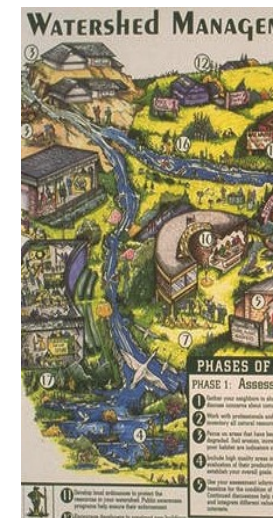


**Our mission is simple – to promote the wise use and improvement of our county resources, in order that future generations will inherit an economically viable county that has made wise choices in resource management.**

[www.clearwaterswcd.org](http://www.clearwaterswcd.org)

Clearwater SWCD Phone: 218-694-6845  
312 Main Ave N, Suite 3 Fax: 218-694-6845  
Bagley, MN 56621

## Educational Resources from Clearwater Soil and Water Conservation District



Pictured is the cover for the Watershed Management Puzzle

**Enriching conservation education  
in the classroom and beyond**

**Tel: 218-694-6845**

# Classroom resources

## Enviroscapes Models

Portable table-top models allow learners to explore conservation concepts through hands-on activities.



The **Watershed/Nonpoint Source Enviroscope** model demonstrates how everything from storm water to agriculture to sewage treatment plants affect water quality. Students see the effects of runoff and then apply conservation practices to this landscape model.

### The Watershed Nonpoint Model

The **Wetlands Enviroscope** model shows how wetlands hold pollution and help control

flooding and erosion. Students witness the potential impacts on wetlands of parking lots, industry, forests, and more.

**Riparian** and **Groundwater Kits** are available to enrich the Enviroscope experience. Allow students to investigate the dynamics of rivers, forests, and other elements that affect surface and ground waters.

Young people from elementary through high school will enjoy the simple to complex lessons Enviroscapes offer. Integrate these activities into lessons on hydrology, ecology, natural resources, urban planning, and agriculture, among other topic areas.

## Puzzles

**Watershed Management** and **Pollution** are two 550 piece puzzles that show the many partners and activities involved in conservation practices.

Students in 5th grade or older will enjoy these challenging puzzles as an enriching afterschool activity, extra credit, or classroom side project.

## Curriculum Guides

**Project WILD** and **Project WET** guides are available for educators. These K-12 curriculum books are *packed* with fun wildlife and water activities. Find just the right game, story, or project to convey scientific concepts.

## District Poster Contest

5th or 6th graders make posters on the theme of **Soil**, **Water**, or **Trees**. Study guides are available for lesson planning and posters may advance to regional competition. A great project for a science and art integrated lesson plan!

## Consultants/Speakers

SWCD staff are available to assist teachers preparing lessons on topics including sustainable land use, watershed management, forestry, surface water quality, and ground water protection. Upon request, staff may also attend your class or youth group discussion on these topics.

# Beyond the classroom

## Envirothon

Envirothon is North America's largest outdoor environmental learning competition. Participation in this

popular annual event is open to 9th through 12th graders.

Student teams or classes study the topic areas. They also research a given scenario and prepare a group presentation on it. Students from around northern Minnesota then attend our region's competition each April at Lake Bemidji State Park.

Groups rotate through interactive talks by regional experts on **Forestry**, **Soils**, **Wildlife**, and **Current Events**. They then take quizzes based on those subjects. Quiz and group presentation scores combine to determine which teams advance to state-wide competition.

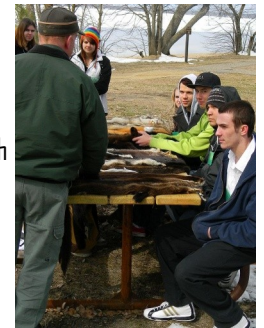
Most years a stipend is available for winning teams to defray the cost of travel to the state competition.

Winning teams at the state level then advance to the national Canon Envirothon.

## Conservation Farm

Student groups are welcome at the SWCD Conservation Farm and Learning Center. Visit demonstration projects such as prairie or wetland restorations as well as reforestation plantings.

This site can also support other lesson plans such as plant ID, forestry, orienteering, and other applied outdoor skills. Call us to discuss options!



The Wildlife station at Envirothon 2011